



DVSR HYBRID SERIES

Short Cut Keys

F1 - System Information

F2 - User Manual

F3 - Quick Reference Guide

F4 - Nero Express Burning Software

F5 - Back Up Folder

IBT DVSR Hybrid Series

The IBT DVSR Hybrid has many user features for live and playback mode. Please read the following manual to better familiarize yourself with your IBT system.

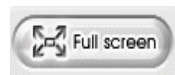
Live View



Each icon you click on will display on main screen.



Record icon must be highlighted at all times.
Do not turn off.



Click on full screen to enlarge screen with no icons showing.



e-map allows you to import a map of your location and place camera's on map.



Auto scan will rotate single or multiple camera's on live view.



Network Icon must be highlighted in order for a user to connect from a remote site.



Event Log allows user's to search system events and save to a text file.



Tools allows user's to make setting changes and back up video.



Click on snapshot to save a live picture of a single or split screen.



Used for controlling PTZ camera's.



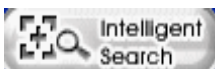
Playback icon allows you to enter the playback screen to review video.

Playback Mode

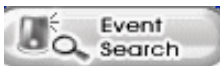
To enter playback click on the playback icon in the lower right corner of the screen. Once in playback please follow the instructions below.



- 1) Click on the date icon. >>>
- 2) Figure 1 will open on the screen.
- 3) Select the appropriate date from the calendar.
- 4) Now select the appropriate time needed. The numbers to the left are your camera numbers. The numbers across the top of the screen is your time selection.
- 5) Simply click on the specific hour needed and click OK.
- 6) The cameras will start playing back. You can enlarge a camera by clicking on it.
- 7) You can pause, fast fwd, rewind, play, and go to the next frame or previous frame.
- 8) Once the video is playing back you can select a different hour by clicking on the hour at the bottom of the screen.



Intelligent Search Intelligent search allows you to right click and create a specific area of concern and then search by time and date any motion within that specified area.



Event Search Event search allows the user to search for any of the following conditions: Sensor - Motion
Video Loss - Pos



Visual Search A user can search files down to the second for a specific camera to check for camera angle change or motion on cameras and playback that file instantaneously.

Bookmark You can bookmark an important file so that it is never recycled.

Event Log This log is the same as live view and also allows you to click on that event to bring you to that time and date on the camera screen.

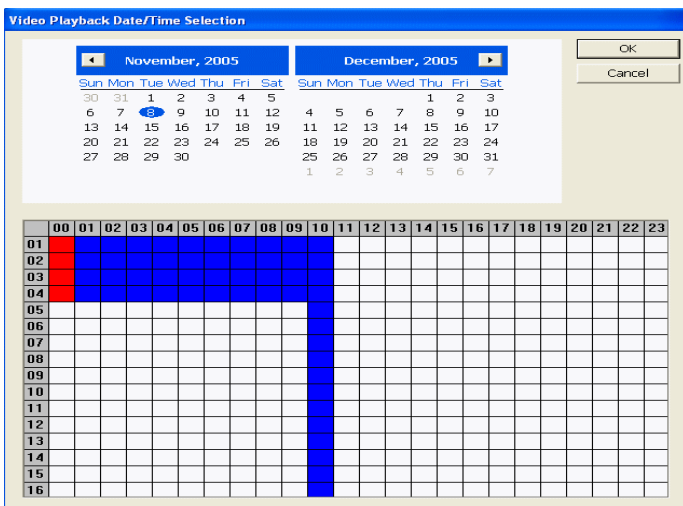
Full screen Clicking on full screen will enlarge the video with your controls at the lower portion of the screen.

Snapshot Clicking on snapshot takes a picture of any single/split screen and saves to a predefined location.

Print You can print a picture directly to any printer connected to the DVSR.

Segment Create a specific video clip by clicking on segment to start the clip and then dragging the control bar to an end time and clicking segment again. Then use the output feature.

Output Once your segment is created click output and save the file as an Mpeg, Avi, or DVR file.



Once playback is complete click the eye to return to live mode.


Fig. 1

TO BACK UP VIDEO TO YOUR HARD DRIVE OR AN EXTERNAL SOURCE PLEASE FOLLOW THE INSTRUCTIONS THAT FOLLOW.

Backing Up Video

To back up video clips make sure you are in the preview screen then click on setup. You will be required to enter a user name and password. Once in setup click on Backup. >>>>>



- 1) Figure 1 will open.
- 2) Now click on the date needed from the calendar.
- 3) Next click on any camera and time needed. Each file is in 1 hr increments. The row of numbers to the left are the camera numbers. The top row of numbers across the screen are the hours.
- 4) You will see the amount of selected files at the top of the screen along with the required space needed.
- 5) This is very helpful because you will know how many CD's will be needed once you are in the burning process.
- 6) Click on auto partition and choose CD.
- 7) If My Documents is not in the location box, click on this icon. >>>> 
- 8) Now select My Documents and click OK.
- 9) Click on Backup now.
- 10) Once the backup is complete click OK. Then click Burn (Fig. 2)
- 11) Another screen will open, video files are already selected and ready to burn to a CD. (Fig. 3)
- 12) Place CD in CDRW drive and click on the Burn option.
- 13) When finished, click on Exit.

Verify your video after it is burned to CD by following the instructions on page 6.

Fig. 1

Fig. 2

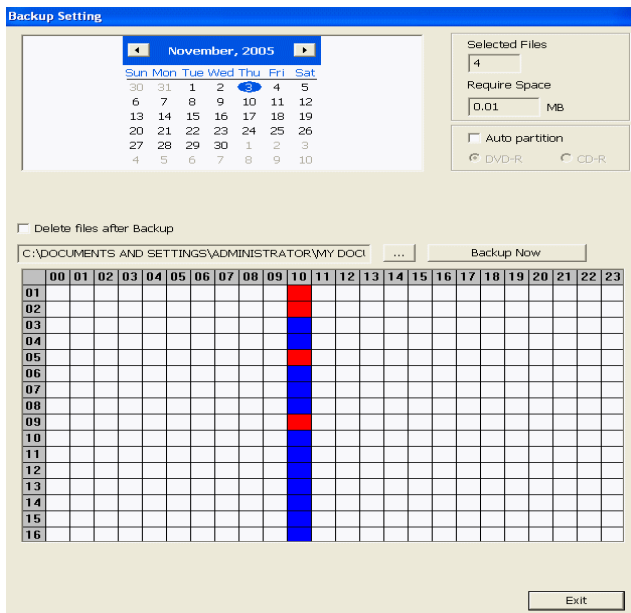


Fig. 3

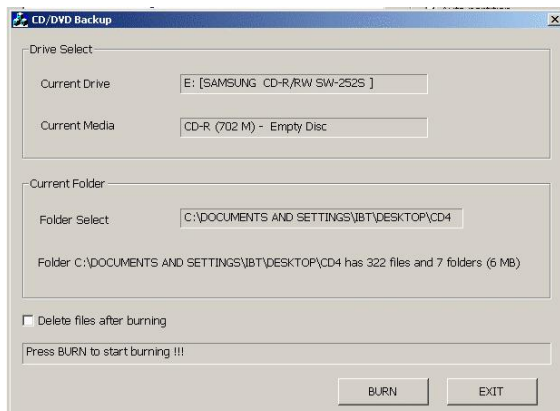
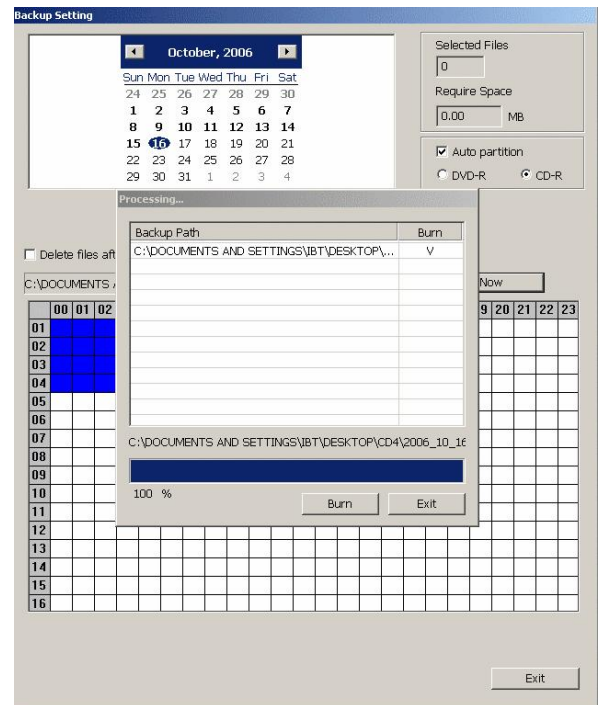


Fig. 3

Burning Files to CD Using Nero Burning Software

- 1) Insert a blank CD-R into your CDRW drive. Then press the F4 key on your keyboard.
- 2) Next click on data then data disc. A disc content box should open. (Fig. 1)
- 3) Now click on add. A select files and folders box will open. (Fig. 2)
- 4) Now select My Documents and then select the Backup folder and click Add.
- 5) You may now close the select files and folders box by clicking on the x in the top right of the box.
- 6) The folder you added should be in the disc content box. Now click next.
- 7) A box will open for your final burn settings. (Fig. 3)
- 8) Click on burn in the lower right corner of the screen.
- 9) The folder will burn to CD and when complete the program will verify data on the CD.
- 10) Once data is verified a completion box will open. Click ok. (Fig. 4)
- 11) Now click next. Then close the box by clicking on the top right of the screen.
- 12) Another box will open to save changes to ISO1. Click No.
- 13) The file or folder should now be on your CD.

You can verify that the video is on the CD by following the instructions on page 6. Playing Back Video on CD.

Fig. 1

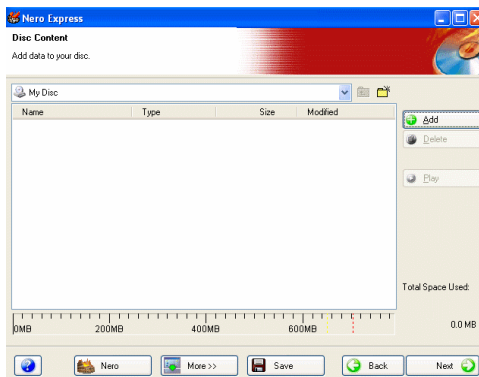


Fig. 2

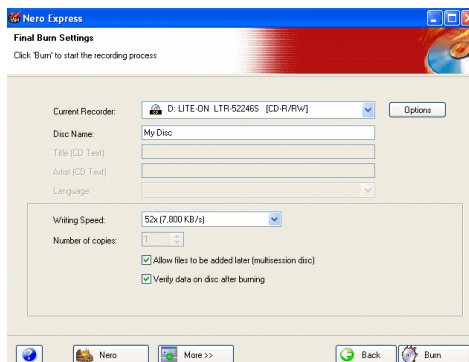
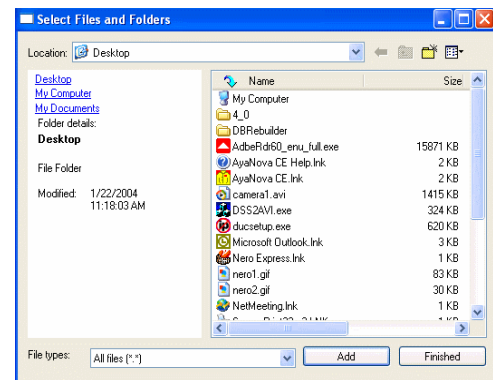


Fig. 3

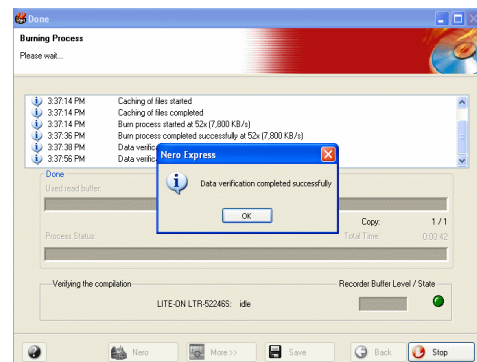


Fig. 4

Playing Back Video on CD

- 1) Place the CD in your CD Drive. When the box to the right opens select (Open folder to view files using Windows Explorer) then click OK.
- 2) The CD will then open showing you the content.
- 3) There should be a Backup folder on the CD.
- 4) Open up the Backup folder and then you will see a Disk 1 folder. Depending on how much video was backed up you may see multiple Disk folders labeled 1, 2....
- 5) Once the Disk folder is opened you will have your Date folders along with other files that are needed to playback your video.
- 6) There are two player programs that you can use to play the video back. See below.



You can open this player and then search video for the date and time that you backed up. This is similar to your playback screen on the DVR. **Fig 1.**

- 1) Simply select the date then the time of the video that you backed up then click Ok.
- 2) Your playback controls will be at the lower portion of the screen.



This player can be used for single camera playback.

- 1) Once this player is open click on the folder in the lower right of the screen. **Fig. 2**
- 2) Now search the CD drive then open the backup folder.
- 3) Next open the Disk 1 folder.
- 4) You will be able to choose any channel and open it. **Note:** A channel corresponds with the camera number.
- 5) Once that channel is open all the 1 hr files will show. Simply double click on that file and the video will open on the screen. You will have all the playback controls at the bottom of the player screen.

Note: Once you have verified the video it is recommended to delete files saved in your back up folder or they will accumulate and your storage capacity on the main drive will lower. Click F5 on the keyboard of the DVR. Then left click on any Disk folder that shows and click the red X to delete that file. Once complete close that screen.

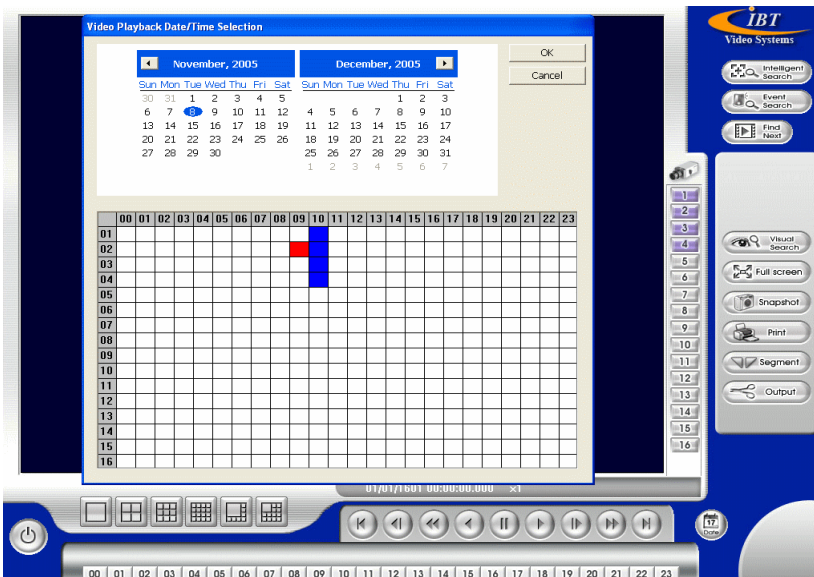
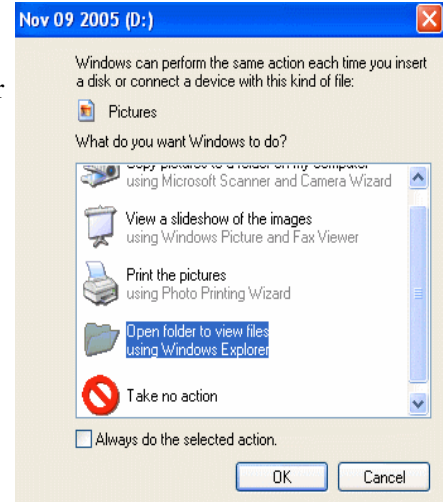


Fig. 1

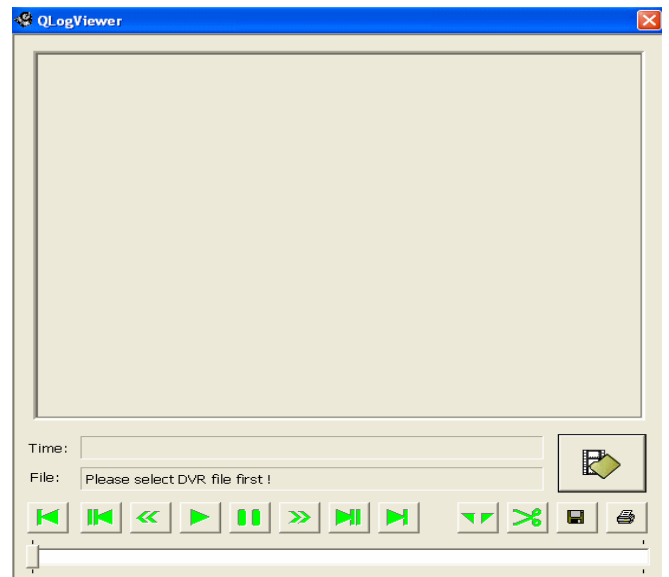


Fig. 2